

LANDMARK IMPLEMENT, INC.

2025-2026 Preferred Service Brochure



JOHN DEERE



www.landmarkimp.com



**LOOK FOR
DETAILS
INSIDE**

on how you can
receive a
cell phone
mount with
qualifying
service work.



Guaranteed Parts and Service

A Promise from LandMark Implement

At LandMark, we pride ourselves on doing more to meet your parts and service needs. Our highly trained team of technicians, parts and service professionals are willing to go the extra mile for you with a commitment to providing the ultimate customer service.

We raise the bar with the standard
John Deere warranty:

- 6-month warranty on John Deere parts purchased over the counter
- 1-year warranty on parts and labor for all non-maintenance items when repairs are installed by our factory trained techs **in the shop or in the field - no matter what color of equipment you operate**
- Extended store hours and extensive “on call” service and parts options
- Delivery between our locations with potential same-day service
- A choice for shipping options



Table of Contents

Clinics	4
Inspections	5
Service Add-Ons	9
Promotions	10
Skid Steers, Gators, Mowers	11
Uptime	12
Parts, Transport and John Deere Financial	14
Bulk Oil Delivery	15

Enroll in LandMark’s Text Notifications

Receive updates, exclusive offerings, after hours notifications, special discounts and more! Text the word **LandMarkImp** to **308-222-5400**. For updates on your specific location, text LandMarkImp followed by your servicing location.



LandMarkImp Arapahoe	LandMarkImp Hebron	LandMarkImp Minden
LandMarkImp Beatrice	LandMarkImp Holdrege	LandMarkImp Phillipsburg
LandMarkImp Fairfield	LandMarkImp Kearney	LandMarkImp RedCloud
LandMarkImp Gothenburg	LandMarkImp Lexington	LandMarkImp SmithCenter
LandMarkImp Hastings	LandMarkImp Marysville	LandMarkImp Superior

YOU'RE INVITED TO LANDMARK'S 2025 PARTS & SERVICE EXPOS

YOUR BEST TIME TO PURCHASE OR PRE-ORDER PARTS ALL YEAR!

Tuesday, December 2
FAIRFIELD, NE

Tuesday, December 2
LEXINGTON, NE

Wednesday, December 3
KEARNEY, NE

Wednesday, December 3
RED CLOUD, NE

Thursday, December 4
SMITH CENTER, KS

Thursday, December 4
SUPERIOR, NE

Friday, December 5
BEATRICE, NE

Friday, December 5
PHILLIPSBURG, KS

Monday, December 8
HASTINGS, NE

Tuesday, December 9
GOTHENBURG, NE

Tuesday, December 9
MINDEN, NE

Wednesday, December 10
HOLDREGE, NE

Wednesday, December 10
MARYSVILLE, KS

Friday, December 12
ARAPAHOE, NE

Friday, December 12
HEBRON, NE

▲ The above locations are hosting EXPO events at their location, however specials and discounts are available at all locations throughout the month of December.



2024 LANDMARK EXPO WINNERS

**ATTEND YOUR LOCAL EXPO IN DECEMBER
TO REGISTER TO WIN SIMILAR PRIZES!**

LANDMARK IMPLEMENT 2026 CLINICS

As we work to set our dates for the 2026 clinic season, look for additional information at your local LandMark location, at www.landmarkimp.com/events, on Social Media, on the LandMark App or by joining our text alerts.



OPERATIONS CENTER

Contact your LandMark CTS for one-on-one training

NEW THIS YEAR!

SPRING EQUIPMENT AND TECHNOLOGY CLINIC

Previously known as Planter & Sprayer Clinics

February 3-5 | Kearney, NE

Buffalo County Fairgrounds

FALL COMBINE CLINICS

August 4 | Hebron, NE

August 6 | Kearney, NE

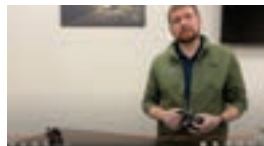
FALL AIR SEEDER CLINIC

August 26 | Smith Center, KS

CAN'T ATTEND? LANDMARK CLINICS HAVE GONE VIRTUAL!

Over the past years, we've worked on creating a library of support videos for our combine clinic, wheat harvest clinic, air seeder clinic and portions of our planter clinic. These videos are in place to help growers who are unable to attend clinics or need a refresher before heading to the field.

You can find these videos on the LandMark app, at landmarkimp.com under the Precision Ag tab then Support Videos or on YouTube.com when you search LandMark Implement and click on Playlists.



Scan this QR Code to view all LandMark Implement Clinic Playlists →



▶ TRACTOR

CLINIC SCHEDULE ▶



- Check and record hydraulic and transmission pressures
- Dyno and record horsepower
- Recall and check stored codes
- Submit oil and coolant samples for testing
- Inspect batteries and charging systems
- Check operation of all electrical functions
- Insure all safety features are operating correctly
- Lubricate fan drive (if equipped with proper fittings)
- +Ask for details on our Tractor Wash!

1-4 Family COMPACT UTILITY TRACTOR

\$225 | 60-POINT
INSPECTION



20-7R Series 2WD ROW CROP

\$400 | 69-POINT
INSPECTION +
POWER CHECK



MFWD Row Crop 50-8R Series

\$475 | 69-POINT
INSPECTION
+ POWER
CHECK



20-9R Series 4-WHEEL DRIVE

\$525 | 69-POINT
INSPECTION





SELF-PROPELLED

- Inspect engine, cooling and fuel systems
- Check all fluid levels and filters
- Inspect on board air system
- Inspect hydraulic and hydrostatic system
- Check cab functions and operator's station
- Inspect boom and solution tank
- Check all plumbing, hoses, fittings, tips, and nozzles
- Check solution system and foam marker system
- Check AMS components
- Inspect lights and safety equipment
- Winterization not included
- Submit Oil and Coolant samples for testing

\$680 | INSPECTION

*Sprayer tank must be clean and free of chemicals prior to inspection

+Ask for details on our Sprayer Wash!

PULL-TYPE

- Inspect main frame, boom and solution tank
- Inspect solution system and foam marker system
- Check all plumbing, hoses, fittings, top, and nozzles
- Inspect solution pump
- Check all wheel bearings and hubs
- Inspect PTO driveline
- Check electrical system and monitor function
- Calibrate flow meter and ground speed sensor

\$350 | INSPECTION

WINTERIZATION

With Inspection:

\$195 | LABOR ONLY

Without Inspection:

\$400 | LABOR ONLY

* Sprayer must be rinsed off or additional chargers may apply.

Does not include winterizer fluid.

PLANTER & AIR DRILL INSPECTIONS

▶ COMBINE, BALER & WINDROWER

PLANTING & SEEDING ▼



PLANTER

METERING UNIT FINGER PICKUP

\$30/ROW | **TEST & REPAIR**

METERING UNIT VACUUM STYLE

\$25/ROW | **TEST & REPAIR**

15% OFF DEALER INSTALLED PLANTER PARTS
SEE PAGE 9

COMPLETE PLANTER INSPECTION

\$65/ROW | **TEST & REPAIR**

Includes metering test unit.

OUR PLANT READY PROGRAM INCLUDES:

- Post-plant complete planter inspection
- Your CTS will set up all AMS components needed to ensure you're ready to plant including updating software, checking GreenStar display settings, set section control settings and calibrations
- Pre-plant training sessions and clinics
- A LandMark professional will assist with in-field startup on your first day in the field
- A LandMark Professional will follow-up in-field 2-4 days after startup to check all variable functions
- This program qualifies you for **15% off parts** installed in our shop if needed after inspection.

See your local Service Manager for full details on LandMark's Plant Ready Program.



AIR DRILL

\$575 | **105-POINT INSPECTION**

- Check seed meters for wear
- Check seed disks for diameter and damage
- Check seed boots for wear
- Check opener unit pivot pins and bushings
- Check gauge wheels for wear and damage
- Check all bearings
- Check for broken bolts
- Inspect all safety equipment

Some restrictions apply; other special rates and terms may be available. See your LandMark Service Manager for details.

COMBINE, BALER & WINDROWER INSPECTIONS

► PROMOTIONS



COMBINE +Ask for details on our Combine Wash!

- Check operation of displays and monitoring systems
- Recall and check stored codes
- Inspect belts and chains
- Check the wear levels on augers and concaves
- Check operation of feeding, separator and unloading systems
- Inspect bearings and sprockets
- Check operation of all electrical and hydraulic systems
- Check operation of safety features

\$575 | WALKER COMBINES
300+ POINT INSPECTION

\$30/ROW | CORN HEAD INSPECTION

1/2 OFF PLATFORM OR CORN HEAD INSPECTION
SEE PAGE 9

\$700 | ROTOR COMBINES
400+ POINT INSPECTION

\$225 | PLATFORM OR DRAPER INSPECTION

15% OFF DEALER INSTALLED HEADER & DRAPER PARTS
SEE PAGE 9

\$875 | X9 COMBINES

BALER

- Inspect belts and splices
- Check pick up and cams
- Inspect rolls and bearing
- Inspect net wrap/twine systems
- Check drive train operation

\$325 | 78-POINT
INSPECTION



WINDROWER

PULL-TYPE

- Check condition of bearings and shields
- Check all fluid levels
- Inspect belts and drives
- Check conditioning roll pressure and timing
- Inspect cutting components
- Check operation of all electrical components

\$185 | 55-POINT
INSPECTION



SELF-PROPELLED

- Powertrain inspection
- Conditioner rolls
- Cutting components
- Codes
- Fluid levels
- Belts and drives

\$350 | 125-POINT INSPECTION
AND CLEANING



COMBINE, BALER & WINDROWER ►

LANDMARK PROMOTIONS

15% OFF PLANTER PARTS

installed after inspection by
our trained technicians

\$65/ROW | TEST & REPAIR
includes metering unit test

ANNUAL OIL & FILTER SALES

Entire Month of December

15% OFF HEADER AND FLEX DRAPER PARTS

installed after inspection by
our trained technicians

RECEIVE 1/2 OFF THE PRICE OF A PLATFORM OR CORN HEAD INSPECTION

When used in conjunction with a
completed combine inspection

Programs run November 1, 2025 - May 31, 2026. All promotions are standalone and may not be combined, or used with other promotions.

▶ SERVICE ADD-ON PACKAGES

BUY 3 - GET 4TH FREE!

Complete 3 service inspections of equal or lesser
value and the 4th inspection is FREE!

WHOLE FARM DISCOUNT

Do you have more than 4 pieces of equipment that
are integral to your operation? Take advantage of
our Whole Farm Discount! Send all of your equipment
to your local LandMark Implement for professional
service inspection and receive special pricing!

Contact your LandMark Service Manager for details.



FREE CELL PHONE MOUNT WITH INSPECTIONS!*

Keep your phone right where you need it! Choose a
sturdy clamp or powerful suction cup attachment,
and count on smooth 360° rotation with a
rock-solid hold - even on bumpy roads or
in the field. This phone holder will be given to
everyone signing up for ag equipment,
skid steer, and power unit inspections.

*Gators and lawn mowers excluded.
See your LandMark Service Manager for details.

PROMOTIONS ▼

SERVICE ADD-ON PACKAGES

FUEL SYSTEM FLUSH PACKAGE

With the advance in fuel systems during the last 15 years, fuel quality requirements have reached a new high. To achieve maximum efficiency and maintain the fuel system components in your engine, we are recommending a fuel system flush annually on all diesel engines built after 2002.

\$275 | UP TO 2 FULL SYSTEM FLUSHES TO CLEAN UP THE FUEL SYSTEM.

***RECOMMENDED TO COMPLETE ANNUALLY. DOES NOT INCLUDE REPLACEMENT ENGINE FUEL FILTERS OR FLUID FLUSH.**

Additional charge if more than 2 are required.

SPRAYER SOFTWARE EVALUATION & UPDATE

With several controllers on today's sprayers and being heavily integrated with AMS components, the health of today's machines is very dependent on software. Let us update all of the sprayer's controllers and keep your machine up-to-date. We will also provide you with an engine utilization report on Tier 3 or 4 and newer machines.

\$275 | SERVICE ADVISOR HOOK UP, CLEAR CODES, UPDATE CONTROLLERS, PRINT ENGINE UTILIZATION REPORT.



TRACTOR SOFTWARE EVALUATION & UPDATE

As tractors become more high tech and have 20+ controllers operating on them at one time, it is becoming more and more important to keep them up-to-date and keep them calibrated to the tractor. Let us check over your tractor's software, pull and clear codes, recalibrate the transmission for improved shifting and recalibrate your hitch. If your tractor has a Tier 3 or 4 engine, we will provide you with a report on the engine load profile over the life of the tractor.

\$275 | SERVICE ADVISOR HOOK-UP, CLEAR CODES, UPDATE CONTROLLERS, RECALIBRATE HITCH & TRANSMISSION, PRINT ENGINE UTILIZATION REPORT



PLANTER/AIR DRILLS SOFTWARE UPDATE

Often there are new software updates that are released by Seeding Factory that can improve the performance of your monitoring systems. This only applies to SeedStar / SeedStar 2 / SeedStar XP / SeedStar 3 HP Systems.

\$75 | UPDATE PLANTER/AIR SEEDER AND/OR BLOCKAGE CONTROLLERS

Additional repairs and parts are not included in the inspection package.

All inspection programs prices subject to change.



COMBINE & HAY EQUIPMENT SOFTWARE EVALUATION & UPDATE

With today's advanced and complex electrical systems on our combines, there might be as many as 22 controllers working on one combine at one time. With all this complexity, often the lack of a software update can mean downtime on the combine or at a minimum, operator frustration. Let us update your software to keep you at the cutting edge of the latest technology. If your combine has a Tier 3 or 4 engine, we will also provide you with a report on the engine load profile over the life of the combine.

\$275 | COMBINE \$50 | BALERS \$75 | WINDROWERS

Service ADVISOR Hook Up, Clear Codes, Update Controllers, Print Engine Utilization Report.



Parts not included on inspection, service or service maintenance prices. Talk to your Service Manager for residential discounts.

Some restrictions apply; other special rates and terms may be available.

SNOW BLOWERS

- Remove, Clean, Inspect, Install and adjust Snowblower Carburetor

\$75 | **INSPECTION AND SERVICE MAINTENANCE**

\$50 | **CARBURETOR REPAIR**



POWER UNITS

- Comprehensive Inspection and Tune-up Program
- Labor Only
- Lube adjust and check clutch operation

\$510 | **4-CYLINDER**

\$585 | **6-CYLINDER**

- Check and adjust engine timing
- Adjust valve clearance, replace cover gasket



SKID STEER LOADERS

- Check operation of electrical and safety systems
- Inspect axle bearings, chain cases and chains
- Inspect booms, pivots, and locks

\$380 | **30-POINT INSPECTION**

\$300 | **SERVICE MAINTENANCE**

\$450 | **FULL SERVICE**

- Check steering system, foot pedals & linkages
- Insure safety interlocks and operational
- Check hydraulic standby pressure



GATOR UTILITY VEHICLES

- Check powertrain and all electrical functions
- Inspect fuel and air systems

\$150 | **INSPECTION**

\$150 | **SERVICE MAINTENANCE**

- Inspect steering and brakes
- Change engine oil and filter
- Replace air filter, fuel filter and spark plug



RIDING & ZTRAK MOWERS

- Check powertrain and all electrical functions
- Inspect fuel and air systems

\$150 | **INSPECTION AND SERVICE MAINTENANCE**

- Level deck and sharpen blades
- Includes maintenance service labor



Parts not included on inspection, service or service maintenance prices. Talk to your Service Manager for residential discounts.

Some restrictions apply; other special rates and terms may be available.

LANDMARK IMPLEMENT UPTIME SERVICE PACKAGES

6M/R, 7R, 8R, 9R TRACTORS | \$1,500
WINDROWERS | \$1,500
4, 400, 600, AND 800 SERIES AND HAGIE SPRAYERS | \$2,000
S-SERIES COMBINES | \$2,000
X-SERIES COMBINES | \$3,000

UPTIME AVAILABLE

on new or used equipment within basic factory warranty

- Remote Support Package
- JDLink™ Administration
- Annual Machine Inspection
- Fuel system flush
- Emissions check-up
- Machine utilization reports
- Free travel under regular machine warranty
- Warranty check-up (if eligible)
- No cost for replacement machines
- PowerGard™ protection extended warranty (at an additional cost)
- GUARANTEED UPTIME! **

REQUIREMENTS FOR UPTIME MACHINES

- Machine must be in a valid Operations Center Account
- Used machine must be inspected and all work done prior to purchasing UPTIME package
- If possible the purchase or extension of PowerGard™ is highly recommended
- Tractors must have less than 5,000 hours and be less than 10 years old
- Sprayers must have less than 2,500 hours and be less than 6 years old
- Combines must have less than 1,500 hours and be less than 6 years old

UPTIME Packages automatically renew 12 months after purchase as long as the machine still meets UPTIME requirements.

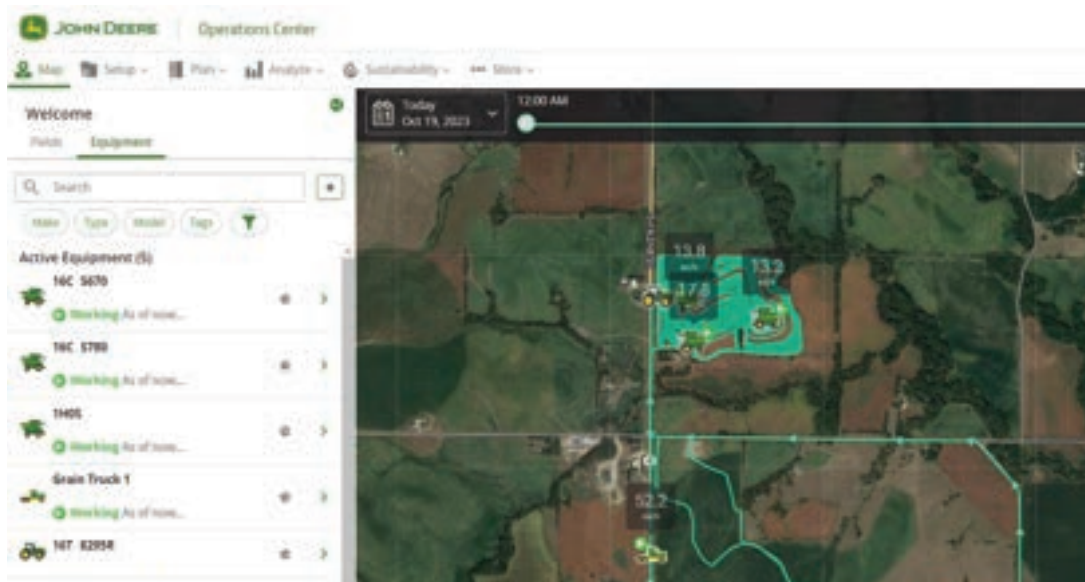
Contact (303)4-UPTIME (303)487-8463 to sign up or renew your UPTIME package on your equipment.

*All service provided at LandMark Implement Dealership Service Department. Pricing subject to change. Separate UPTIME Package available for commercial sprayers.

**Replacement machine is provided after machine is down for over 48 hours. Package renews every 12 months.

Light up your Fleet and Save up to \$300 on a MTG

through October 31, 2025. Offer may be extended or ended without notice.



Unlock real-time location tracking and machine insights that make your operation more efficient.

- Know where your equipment is always. From coordinating incoming semis during harvest or tender trucks in the field during spraying, **knowing exactly where each machine is** can help prevent delays.
- View machine location history in Operations Center. Understand where machines have been, how long they were running, and **what fields they've covered**.
- Compare performance across your fleet. Use the data to **identify which machines are underperforming**, idling too long, or burning more fuel than they should.
- Make informed decisions. With detailed utilization and performance reports, you're able to **improve logistics, plan proactively, and reduce unnecessary downtime**.



¹³ From the field to the office, MTGs keep you connected to your equipment so you can run smarter every day.



LandMark offers custom hauling for over-sized agricultural and commercial equipment across the Midwest **no matter the color, size or type of equipment you operate**. We will take care of the critical aspects of pulling a heavy load, including legal considerations, permits and technical challenges to ensure a safe and successful delivery for you.

Contact: 855-LMHAULS
855-564-2857
dispatch@landmarkhauls.com

Our Fleet Includes:

- 12 Semi Trucks
- RGN Trailers
- Step Deck Trailers
- Oil Tanker
- Flatbed Trailers
- Lube Truck

PARTS

Even the most dependable equipment needs a new part now and then. Our trained professionals understand any significant downtime could be the difference between profit and loss. We are committed to making sure you get the maximum value you demand from your equipment. Give us a call or stop by and talk to your local LandMark Parts Manager to help determine what parts solutions best fits your needs.

CUSTOMER PORTAL

Look up your own parts or check our stock for availability and prices without leaving home on the LandMark Dealer Customer Portal. You are also able to request service, make payments, and view past transactions.

PARTS ONSITE

Make parts availability the least of your worries with John Deere Parts Onsite. Your LandMark Parts Manager will work with you to determine the best parts inventory needed for your operation. Then, you stock the parts at your shop or farm to reduce downtime.

A&I PRODUCTS

A&I Products offers options of after market replacement parts for any color, any age, and at any budget. An economical repair option for your equipment. Whether you have an older John Deere machine or a mixed fleet, A&I offers a solution.

REMAN

Cut costs, not quality with remanufactured (REMAN) parts. REMAN means remanufactured using only 100% John Deere components - Not repaired, rebuilt, or reconditioned - so you can be confident you're getting the best quality replacement possible.

SHOP.DEERE.COM

Choose from a wide range of John Deere parts and merchandise online with shop.deere.com. Shop anytime, choose in-store pick up, or have your order delivered right to your door!

**NO PAYMENT - NO INTEREST
UNTIL MARCH 1, 2026!**

**ON GENUINE JOHN DEERE PARTS, SERVICE
AND ATTACHMENTS PURCHASES! \$200 MINIMUM**

*Offer runs through October 31, 2025. For qualified candidates through John Deere Financial. Price and availability may vary. Some restrictions apply; other special rates and terms may be available. See your local LandMark for details. Plan #12094.





LandMark continues to work to keep your costs down while providing you the best possible service. The LandMark Bulk Oil Program does just that, allowing us to be more efficient with one-stop delivery to your farm offering: engine oil, hydraulic oil, drip oil, ISO 22 and DEF. **Our bulk oil systems work for all farming operations - no matter what color of equipment they operate.**



**SCAN TO
ORDER ONLINE**

For up-to-date pricing, or if you would like to begin receiving our setup and delivery service for bulk oil, contact your local LandMark Parts Department today! No minimum delivery required.

Take advantage of everything that the program has to offer. If your using more than 2 drums of oil a year than our bulk oil program may be a good solution for you.

- Convenience: free delivery to your farm
- Lower Cost: save money per gallon compared to buckets or drums
- Less Waste: less empty oil containers strewn about your shop
- Extended Lifetime: formulated to perform up to 500 hours in your John Deere engine* Plus-50™ II Engine Oil 15W-40
- Quality Oil: developed by John Deere engineers alongside John Deere engines
- Versatile Application: one solution for engines of any age
- Quality Oil: developed by John Deere engineers alongside John Deere engines
- Our Bulk Hardware program makes it easy for you to manage and store multiple sizes of hardware on your farm, making quick fixes simple and easy.
- We offer different tank assemblies, reels and pump options. A popular set includes two stackable 120-gallon tanks with a stand. Contact your local LandMark Parts Department for full details.



LandMark Implement, Inc.
5308 Parklane Dr. Ste.8
Kearney, NE 68847

ARAPAHOE | 308-962-7448
603 East St. | Arapahoe, NE 68922
Robert Blecha
robertblecha@landmarkimp.com

BEATRICE | 402-228-3478
21693 Hwy 77 | Beatrice, NE 68310
Ben Kastanek
benkastanek@landmarkimp.com

FAIRFIELD | 402-726-2181
1131 Hwy 74 | Fairfield, NE 68938
Burt Schroer
burtschroer@landmarkimp.com

GOTHENBURG | 308-537-2532
221 Lake Ave. | Gothenburg, NE 69138
Alan Oberg
alanoberg@landmarkimp.com
Bill Holland
billholland@landmarkimp.com

HASTINGS | 402-463-1339
4815 W. Hwy 6 | Hastings, NE 68901
Craig Parr
craigparr@landmarkimp.com

www.landmarkimp.com

HEBRON | 402-768-6077
1443 Dove Road | Hebron, NE 68370
Kurt Klover
kurtklover@landmarkimp.com

HOLDREGE | 308-995-6511
73049 L Road | Holdrege, NE 68949
Joel Konzack
joelkonzack@landmarkimp.com

KEARNEY | 308-237-2238
3108 Hwy 30 East | Kearney, NE 68847
JP Murphy
jpmurphy@landmarkimp.com

LEXINGTON | 308-324-4639
75482 Road 435 | Lexington, NE 68850
Dalton Schafer
daltonschafer@landmarkimp.com

MARYSVILLE | 785-562-2346
553 Pony Express Hwy | Marysville, KS 66508
Mark Jenkins
markjenkins@landmarkimp.com

MINDEN | 308-832-2180
1190 33 Road | Minden, NE 68959
Timothy Engelhardt
timothyengelhardt@landmarkimp.com

PHILLIPSBURG | 785-543-2184
291 E. Hwy 36 | Phillipsburg, KS 67661
Cody Bogart
codybogart@landmarkimp.com

RED CLOUD | 402-746-2239
702 Road 1100 | Red Cloud, NE 68970
Matt Streit
mattstreit@landmarkimp.com

SMITH CENTER | 785-282-6601
910 W. Hwy 36 | Smith Center, KS 66967
Justin Zimmerman
justinzimmerman@landmarkimp.com

SUPERIOR | 402-879-3276
1890 Idaho St. | Superior, NE 68978
Mark Berns
markberns@landmarkimp.com

LANDMARK SUPPORT CENTERS
915 Brewster Rd | Holdrege, NE 68949
5308 Parklane Dr. Ste. 8 | Kearney, NE 68847
308-995-2194

LANDMARK AMS HELPLINE
855-HELP-AMS
855-435-7267

LANDMARK CONNECTED SUPPORT
303-4-UPTIME
303-487-8463

COMMERCIAL APPLICATION
Todd Monie | 308-746-0803
toddmonie@landmarkimp.com
Rollie Sokol | 402-469-9146
rolliesokol@landmarkimp.com

LANDMARK TRANSPORT
855-LMHauls
855-564-2857
dispatch@landmarkhauls.com

GET THE LANDMARK APP!

